



## School of Economics and Commerce

# Department of Commerce and Accounting

- ✦ B.Com
- ✦ B.Com International Accounting and Finance (in collaboration with ACCA)
- ✦ B.Com Advanced Accounting and Auditing
- ✦ M. Com





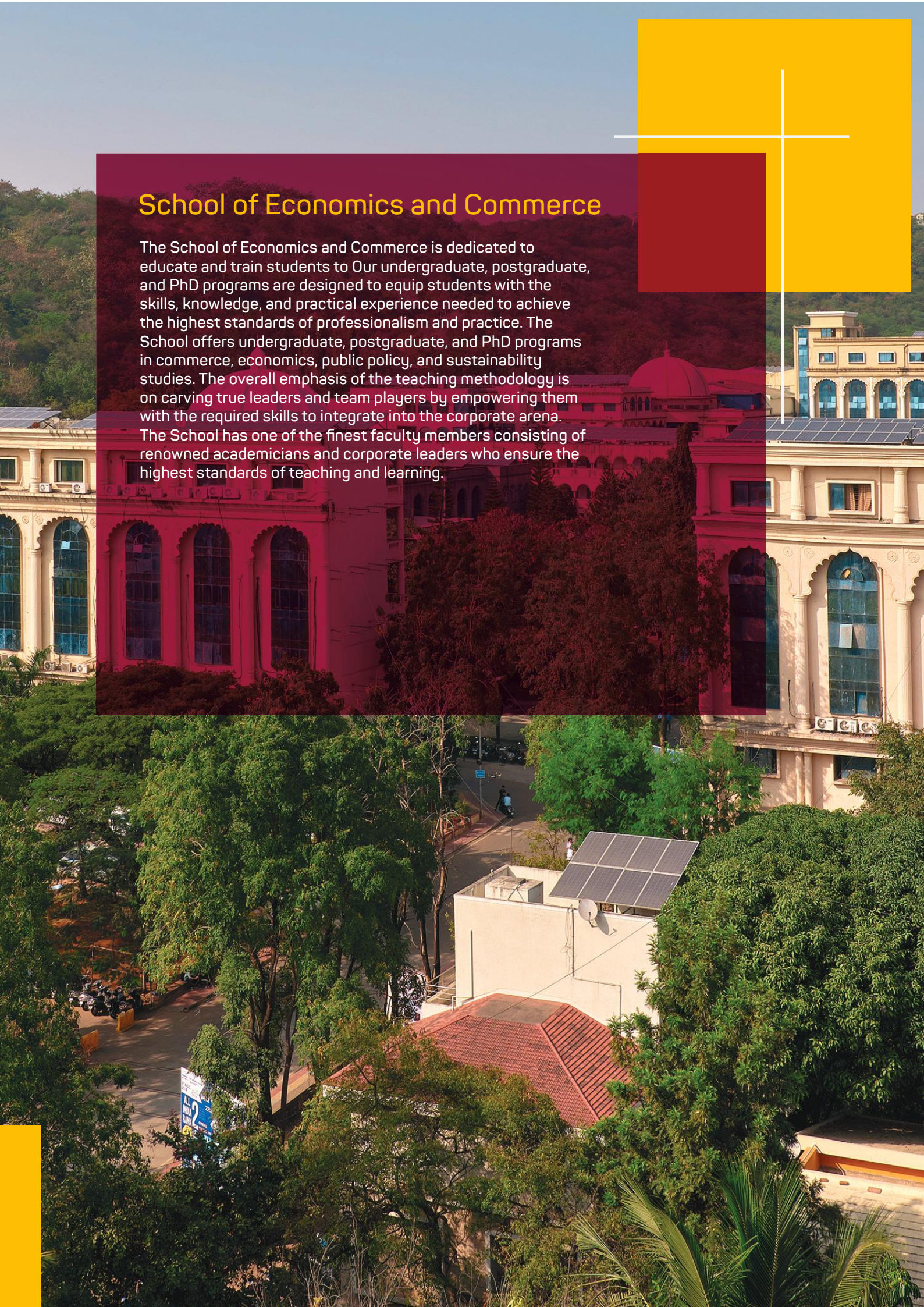
## ABOUT MIT-WPU

With a rich legacy of 40 years of fostering world-class academic excellence and over 100,000 alumni across the globe, MIT-WPU is one of the premier centres of higher learning in India that offers over 150 programmes. The programmes, developed by leading Indian and international academicians, focus on both theoretical and practical aspects. Students at MIT-WPU benefit from a hands-on learning approach, mentor-mentee relationships, internships, and immersion programmes that provide opportunities for real-world learning and personal growth.



## School of Economics and Commerce

The School of Economics and Commerce is dedicated to educate and train students to Our undergraduate, postgraduate, and PhD programs are designed to equip students with the skills, knowledge, and practical experience needed to achieve the highest standards of professionalism and practice. The School offers undergraduate, postgraduate, and PhD programs in commerce, economics, public policy, and sustainability studies. The overall emphasis of the teaching methodology is on carving true leaders and team players by empowering them with the required skills to integrate into the corporate arena. The School has one of the finest faculty members consisting of renowned academicians and corporate leaders who ensure the highest standards of teaching and learning.







## Department of Commerce and Accounting

---

The Department of Commerce and Accounting at MIT-WPU is dedicated to developing skilled professionals who understand financial analysis, tax management, statutory accounting, statistical analysis, and all other core skills required in the field of finance. The Department offers undergraduate and postgraduate programmes with curriculum designed by industry experts. The programmes, which are driven by research, consulting, industry orientation, and a futuristic and interdisciplinary approach, aim to holistically develop a new generation of corporate leaders. Through its application-oriented pedagogy, the Department is dedicated to instilling the true spirit of partnership, innovation, spirituality, humanity, and global peace. The Department develops and prepares students for success in the global accounting and finance professions, as well as skills for achieving larger professional and academic objectives.





## HIGHLIGHTS

- ✦ Case-based, application-based and research-oriented learning approach
- ✦ Skill development and competency development through value-added courses like Forensic Accounting, Advanced MS Excel, Financial Modeling, Six Sigma, and so on
- ✦ Industrial visits, guest lectures, seminars, and workshops led by eminent corporate leaders from the Big Four
- ✦ A wide range of elective subjects to cater to individuals' professional goals
- ✦ Academic immersion programmes at rural, national and international levels
- ✦ 100% assistance with internships and placements
- ✦ Curriculum is regularly updated in consultation with industry experts to reflect current trends and industry needs
- ✦ Dedicated Centre for Industry-Academia partnerships to support students through internships and job placements with world-class organisations
- ✦ Strong alumni network across the globe
- ✦ Live industry projects to expose students to real-world challenges in the field
- ✦ Additional certification courses to improve employment opportunities
- ✦ Elective courses to help students achieve their professional goals
- ✦ Encouraging entrepreneurship in students through funding, mentoring, and network connection in MIT-WPU Pune Technology Business Incubator (TBI)







# ACADEMIC PARTNERSHIPS AND COLLABORATIONS

The Department of Commerce and Accounting at MIT-WPU has partnered with top international universities, demonstrating its commitment for a truly global education. These programmes enable learning beyond borders through the cross-pollination of international disciplinary approaches.

MIT-WPU continues to cultivate, enhance, and sustain global relationships and expand inter-cultural networks for its students through student and faculty exchange programmes, summer and winter programmes, research associations, extra credit programmes, and other activities.

The Department of Commerce and Accounting has collaborations with the international universities listed below.



Macquarie University,  
Sydney, Australia



University of La Trobe,  
Victoria, Australia



Vrije Universiteit,  
Netherland









## DEAN'S MESSAGE

A very warm welcome to MIT-WPU's School of Economics and Commerce! It is at the University that you will formulate a life-long approach to making sense of the world and developing your value system. Our faculty are committed to helping you in the process of gathering information ('the what'), acquiring knowledge (the 'how'), and developing wisdom ('the why').

Because ideas are important to commerce and the growth of industry and nation, students in the Department of Commerce and Accounting are constantly engaged in inquiry and reasoning helped by expert faculty members who bring this excitement of intellectual discovery into the classroom as they help you blend theory with the real world. Across the full set of courses offered by the School of Economics and Commerce, you will also have an exposure to local, regional, and international issues. With a focus on commerce as the critical flow in a nation and accounting as its water, the commerce programmes aim at enabling students to understand the commercial aspects with values, materialism with a conscience, and perceive the state of economy as a forward movement signature of commerce.

MIT-WPU's School of Economics and Commerce offers you an interactive learning environment and a curriculum that provides both rigorous foundations (the 'depth') as well as a wide variety of elective courses (the 'breadth'). Through classroom interactions with your professors and fellow students, you develop your analytical skills and ability to communicate effectively. The courses, internship, and community service provide you an opportunity to be at ease in the business world and develop a social conscience.

I look forward to welcoming you to the School of Economics and Commerce.

**Dr Gunjeet Kaur**

Dean, School of Economics and Commerce, MIT-WPU







## B.COM

The B.Com programme at MIT-WPU provides an ideal combination of core and elective courses, with specialisations in Cost Accounting, Banking and Finance, and Marketing Management. Through case studies, expert sessions, and hands-on projects, students gain a thorough understanding of accounting, taxation, costing, financial management, auditing, and management accounting fundamentals. Through application-based pedagogy, the programme's industry-oriented curriculum instills professional and entrepreneurial skills in students. The programme includes interactions and discussions with industry experts and corporate leaders, as well as a choice-based credit system. The programme prepares students for careers in business, academia, and corporate settings.

**Duration- 3 years\***

**Fee: ₹75,000/- PA**

\*Eligible students who opt for 4th year of undergraduate programme will be awarded Honours degree as per the New Education Policy







Advanced Financial Accounting

Financial Management

Direct Tax - I

Direct Tax - II

Management Accounting

Corporate Accounting

Audit and Assurance

Foreign Exchange Management

Corporate and Business Law

Customs and GST

International Tax Laws

Commodity Market Operations

Startup and Entrepreneurship Management







## B.COM INTERNATIONAL ACCOUNTING AND FINANCE (IN COLLABORATION WITH ACCA)

The B.Com in International Accounting and Finance programme at MIT-WPU is offered in collaboration with ACCA (The Association of Chartered Certified Accountants), United Kingdom. The programme is designed to give students a competitive advantage in solving global business challenges by providing a curriculum that meets international standards. The programme provides students with comprehensive knowledge and problem-solving skills in the field of international accounting and finance through a wide range of subjects in an intensive curriculum that is recognised in 170+ countries and by 8500+ employers. The collaboration with ACCA also provides our students with exemptions from 6 ACCA papers out of 13, while the remaining 7 subjects are fully integrated into the B.Com curriculum.

The programme is among the very few ones in India that is accredited by ACCA.

**Duration: 3 years\***

**Fee: ₹1,30,000/- PA**

\*Eligible students who opt for 4th year of undergraduate programme will be awarded Honours degree as per the New Education Policy







Advanced Business Accounting

Principles of Economics

Management Accounting

Corporate and Business Law

Accounting in Business

Financial Management

Audit and Assurance

International Tax Laws

Foreign Exchange Management

Commodity Market Operations

Taxation - UK (TX)

Advanced Financial Reporting

Performance Management







## B.COM ADVANCED ACCOUNTING AND AUDITING

The B.Com Advanced Accounting and Auditing programme prepares students to navigate the complex accounting and auditing landscape and identify the best strategies to help an organisation track expenditures and income, maintain statutory compliance, and provide quantifiable financial information to investors, management, and the government to help them make better business decisions. Students learn how to evaluate business performance, create budgets and future projections, and file financial statements and tax returns. The curriculum also includes subjects from the Chartered Accountancy Course offered by the ICAI to help students improve their professional skills. Students can find employment in the private and public sectors, public accounting firms, market research, corporations, and consultancies.

**Duration: 3 years\***

**Fee: ₹1,30,000/- PA**

\*Eligible students who opt for 4th year of undergraduate programme will be awarded Honours degree as per the New Education Policy







## MAJOR TRACKS

Accounting - 1

Corporate and Other Laws - 1

Cost and Management Accounting - 1

Taxation - 1

Accounting - 2

Corporate and Other Laws - 2

Cost and Management Accounting - 2

Taxation - 2

Enterprise Information Systems

Financial Management & Economics Finance - 1

Financial Management & Economics for Finance - 2







## MASTER OF COMMERCE

The Master of Commerce programme in association with CIMA, i.e. the Chartered Institute of Management Accountants trains students in the conceptual knowledge, logical reasoning, critical thinking, and analysis in the context of business management. The programme is intended to meet the growing demand for analytical and quantitative problem-solving skills in professionals. The programme has a research-driven approach with a newly added specialisation in 'Research' that equips students with the necessary skills to meet the demands of both the industry and academia.

The department motivates students to participate in and present research papers at a variety of seminars, conclaves, symposiums, workshops, and conferences, giving them numerous opportunities to gain research expertise. The primary areas of research at the department are accounting, small and medium accounting, small and medium enterprises, business policy, stock trading, public finance, international trade and finance, entrepreneurship and business models, and strategy.

Students have an option to opt for CIMA specialisation along with their M.Com degree. After successfully clearing the Management Level of CIMA, the student will be awarded the M.Com. degree from MIT-WPU and Advanced Diploma in Management Accounting from CIMA.

**Duration: 2 years**

**Fee: ₹75,000/- PA\***

\*For M.Com with CIMA: An additional fee of approximately 50,000 rupees (₹500) to be charged separately in first year for students opting for the CIMA specialisation.





## CAREER OPPORTUNITIES

Management Consultants

Business Analysts

Research Associates

Investment Bankers

Loan Officers

Finance Managers

Tax Consultants

Wealth Managers

Financial Analysts

Actuarial Analysts





## Eligibility & Selection Process

### Undergraduate Programmes

- ✦ Minimum 60% aggregate score in class 12th or in equivalent examination with English subject in any stream from government approved institution or equivalent (at least 55% marks, in case of Backward class category candidate belonging to Maharashtra State only)
- ✦ Minimum 60% aggregate score in 3-year Diploma from any government approved institution or equivalent with English as a subject.
- ✦ Minimum 60% aggregate score in Competency and Vocational Courses (MCVC) from any government approved institution or equivalent with English as a subject.
- ✦ The selection process for the programmes is based on MIT-WPU CET Entrance Exam 2023 & Personal interaction (PI) score.

### Postgraduate Programme

- ✦ Minimum 50% aggregate score in B.Com or allied fields of 3/4-year graduation (Commerce/Management) from UGC approved University or equivalent (at least 45% marks, in case of Backward class category candidate belonging to Maharashtra State only)
- ✦ The selection process for the programme is based on MIT-WPU CET Entrance Exam & Personal Interaction (PI) score.





## SCHOLARSHIPS

MIT-WPU awards scholarships to its meritorious students based on their academic performance in requisite National/State Level Entrance Exam scores and in the MIT-WPU CET Examination, conducted by MIT-WPU, for the academic year 2023-24. These scholarships are valid for the duration of the programme\*

### The categories of Merit Scholarships are

- ✦ Dr. Vishwanath Karad Merit Scholarship
- ✦ MIT-WPU Merit Scholarships
- ✦ Scholarships to Elite Sportsperson
- ✦ Scholarship Awarded to Wards of MIT-WPU/MAEER's Staff Members and Alumni

\*Terms & Conditions apply:

All Scholarships are awarded on a First Come First Serve basis

All Scholarships are awarded as fee adjustments.

To continue the scholarship for the entire duration of the programme,

a) A minimum level of the academic score has to be maintained at an 8.5 CGPA across all semesters

b) Attendance is to be maintained at a minimum of 80 percent

c) There should be no disciplinary action against the student.

## B.COM PROGRAMMES

	Dr. Vishwanath Karad Scholarship (100%)	MIT-WPU Scholarship I (50%)	MIT-WPU Scholarship II (25%)
Name of programme/ specialisation	MIT-WPU CET SCORE	MIT-WPU CET SCORE	MIT-WPU CET SCORE
B.Com International Accounting and Finance	90 & above	88 & above	87 & above
B.Com Advanced Accounting and Auditing			
B.Com			

## M.COM PROGRAMME

	Dr. Vishwanath Karad Scholarship (100%)		MIT-WPU Scholarship I (50%)		MIT-WPU Scholarship II (25%)	
Name of programme/ specialisation	Graduation Marks	XII SCORE	Graduation Marks	XII SCORE	Graduation Marks	XII SCORE
M.Com	90 & above	85 & above	86 & above	81 & above	84 & above	79 & above

For more information visit <https://mitwpu.edu.in>





## INTERNSHIP

Experiential learning is an integral component of learning at MIT-WPU. All the programmes offered at the Department of Commerce and Accounting include a compulsory internship. This internship aims to provide a platform to integrate classroom knowledge with related practical applications and skills in a professional ecosystem. The students get a chance to access real-world practical learning that instill critical perspectives for rewarding future career pathways.

**HIGHEST STIPEND IN INTERNSHIP**

**₹75,000/month**  
(Barclays)

## PLACEMENTS

The Training and Placement Cell at MIT-WPU plays a crucial role in locating job opportunities for students who complete their undergraduate and postgraduate programmes by inviting reputed firms and organizations looking for adept professionals. MIT-WPU has been successful in maintaining high placement statistics over the years.

The Placement Cell organises regular career guidance programmes for all students. The cell also arranges training programmes for communication skills, mock interviews, group discussions, and multiple workshops.

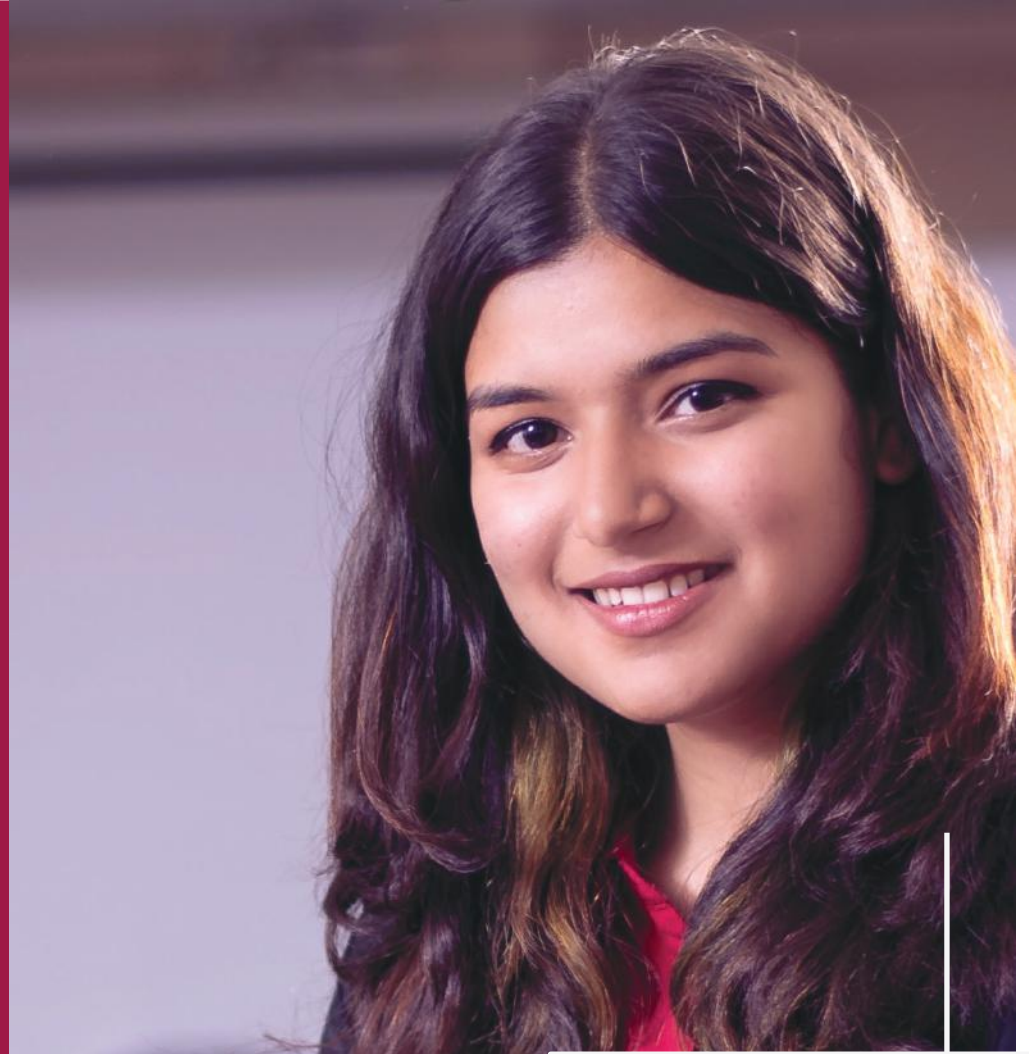
## TOP RECRUITERS



HIGHEST PACKAGE

₹ 11.75 LPA

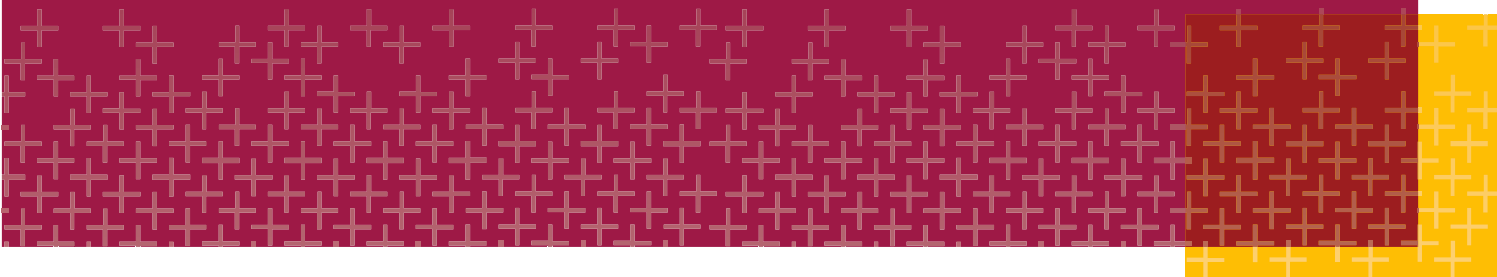




Studying at MIT-WPU is undoubtedly a wonderful learning experience. The University offers excellent professors and fantastic learning opportunities. It encouraged me to explore new avenues. Faculties are available at all times to guide you. The most admirable aspect of this University is how it fosters spirituality in its pupils through its peace programme. Overall, this institution equips students with the skills necessary for lifelong learning and for the real world.



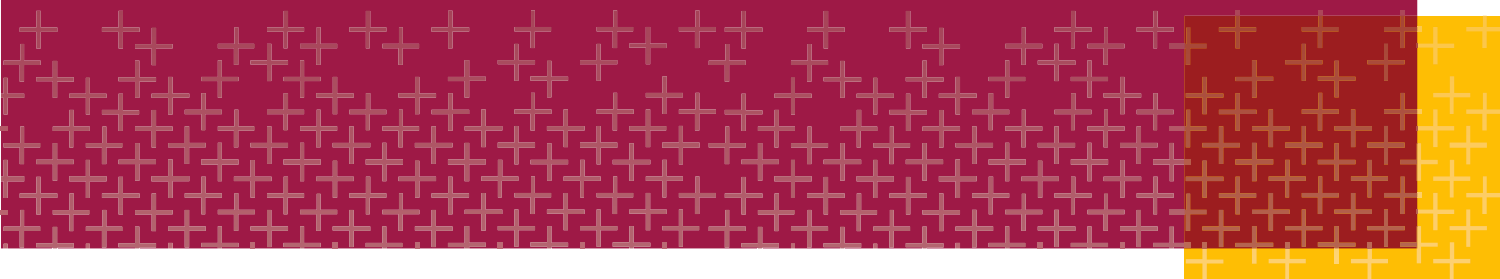
**Khushi Mishra**  
(SYBCom Hons ACCA)





It was my immense luck and fortune to be a part of MIT-WPU where I can grow. The professors leave no stone unturned to shape one's future. Last 1.5 years at MIT-WPU have been a wonderful experience of learning with prolific exposure to the industry. Huge respect, love and devotion for entire faculty members and department. It's their efforts that make me count myself as a good professional and a much better person.

**Dhruv Patil**  
(SYBCom)







My three years at MIT-WPU were wonderful and I will cherish these memories for my lifetime. As I am a very social person, I am constantly looking for fresh challenges and experiences. The MIT-WPU Department of Commerce and Accounting is the ideal setting for one to be brave and express themselves without inhibitions. The MIT-WPU Department of Commerce and Accounting moulds and develops the youth and prepares them for life's toughest challenges. As the President of the Udaan Sports Club, I can assure you that, provides a perfect balance between Academics and Extra Curricular Activities. I am also grateful to the Internship and Placement Cell for providing us amazing opportunities and bringing the best for us.



**Vishwajeet Patil**  
(TYBcom Hons ACCA)

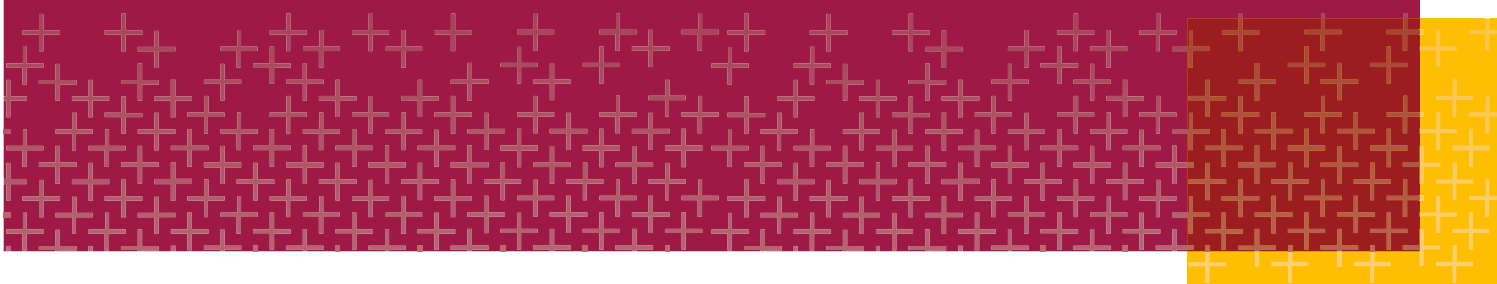




The MIT-WPU Department of Commerce and Accounting has been a great contributor to my overall development. The faculty leaves no stone unturned in order to shape its pupil's future. My 3 years in the university have been more than a wonderful experience of learning with prolific exposure to the outside world. I have acquired leadership and time management skills via a number of interdepartmental events. The infrastructure is excellent as well as the course curriculum which has helped me enhance my knowledge. The university provides the students with academic and professional exposure that prepares us to face the challenges of the corporate world.



**Bhuvi Singh**  
(TYBCom)





# MIT-WPU Pune Technology Business Incubator (TBI)

MIT-WPU Pune Technology Business Incubator (TBI) is the official innovation and entrepreneurship ecosystem of MIT World Peace University. Founded in 2016, the TBI is supported by the Department of Science and Technology (DST), Government of India.

The TBI aims at

- ✦ Nurturing technology business incubation ecosystems
- ✦ Supporting early-stage and experienced entrepreneurs and students through funding, mentoring and networks
- ✦ Converting technically feasible projects into commercially viable start-ups
- ✦ Empowering the youth and helping them become future entrepreneurs

The incubator supports budding entrepreneurs in

- ✦ Technical mentoring
- ✦ Business mentoring
- ✦ Legal and IP support
- ✦ Fundraising support
- ✦ Industry networking
- ✦ MIT-WPU alumni connect

MIT-WPU TBI has tie-ups with DST, NISE, NITI AAYOG as well as top-notch MNC's to provide better exposure to the aspiring entrepreneurs.



## Life at Campus





## RURAL IMMERSION PROGRAMME

MIT-WPU's rural immersion programme is a unique educational opportunity that helps students understand and address the challenges faced by rural communities. During the programme, students visit a village and learn about the local culture, community, and landscape. They work on various projects, such as optimising irrigation systems, conserving and storing water, recycling waste, and using solar power, to improve the rural environment. This hands-on, real-life learning experience helps students develop critical thinking, problem-solving, and community awareness skills. It also helps them gain a deeper understanding of rural society and how their knowledge can lead to innovative solutions. Through these programmes, students learn how to bridge the gap between urban and rural areas in India.





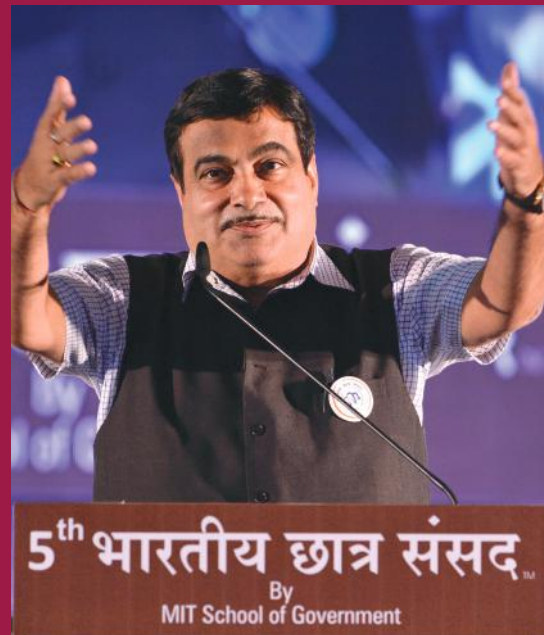
## R.I.D.E.

R.I.D.E is a one-of-its-kind conclave annually conducted and hosted by the Innovation Club of MIT-WPU to expand the horizons of education beyond academics and open the pathway for students towards entrepreneurship. The conclave is meant to expose students to the emerging research, entrepreneurship, design thinking and innovation in various fields. The 5 day conclave witnesses a footfall of over 10,000 students and showcases over 100 start-ups from various sectors including technology, design, healthcare, agri-tech, sustainable energy and retail. More than 50 experts from the venture capital industry address students about the changing face of start-ups, innovations and the evolving market trends to encourage out-of-the-box thinking by simulating a real-world start-up environment.



# BHARATIYA CHHATRA SANSAD

MIT-WPU's flagship social initiative and brainchild of Shri. Rahul V. Karad, the Bharatiya Chhatra Sansad (BCS) is an annually conducted national level event which aims to regenerate youth's interest in the country's political system, governance and administration. This non-political platform aims at sensitising the youth to the changing social and political landscape of the country through debates, discussions, addresses from eminent personalities including the chief ministers and governors of various Indian states, union ministers and members of the parliament. The BCS is also a platform to honour many young sarpanch, local leaders from different parts of the country, and social workers who have brought about a positive change in their localities and the lives of the people. The sansad witnesses participation of students from





## Other Events at MIT-WPU

MIT-WPU is known for its dynamic and engaging academic and extracurricular events, which provide students with numerous opportunities to learn, grow, and get involved in their community. In addition to the well-known events R.I.D.E. and BCS, there are over 100 student-led events that take place at the university throughout the year. These events cover a wide range of interests and topics, from cultural festivals and guest lectures to community service projects and sporting events. By participating in these events, students can gain valuable skills, make new connections, and become more active and engaged members of the MIT-WPU community. Some of the events are as follows:

1	Design Xpo	2	Aarohan
3	Kala Mehfil	4	Hackathon
5	National Conference on Media and Journalism	6	Abhivyakti
7	TEXEPHYR	8	TedX
9	Techogenesis	10	RoboCon
11	Science Expo	12	Social Leadership Development Program (SLDP)
13	World Parliament of Science, Religion and Philosophy	14	Bharat Asmita National Awards
15	National Women's Parliament	16	International Symposium on Law and Peace
17	Vidhi-Manthan	18	Peace Marathon
19	Sports Summit	20	Vasundhara and many more...

# Students' Clubs at MIT-WPU

MIT-WPU is home to a diverse and active student community, with a wide range of clubs and organisations catering to a variety of interests and passions. These student-led clubs provide opportunities for students to get involved, make new connections, and develop their leadership skills.

Majorly, there are 5 categories of clubs at MIT-WPU; cultural, social, sports, co-curricular and NCC/NSS clubs which provide students with opportunities to learn about and explore their specific areas of interest.

## Some examples of clubs at MIT-WPU include:

- ✦ The Innovation Club, which hosts events and workshops related to entrepreneurship and innovation
- ✦ The Art and Photography Club, which brings together students with a shared interest in artistic expression
- ✦ The Sports Club, which organises sporting events and activities for students to participate in
- ✦ The Cultural Club, which celebrates the diversity of the MIT-WPU community and promotes cultural exchange
- ✦ Aatman - It is the only Mental Health Club of MIT-WPU, Pune, that is led by the students of the Psychology department.
- ✦ Team Dart - Team Dart is a motorsports team of MIT-WPU which annually participates in a competition named Rally Car Design Challenge (RCDC) organized by professional industry sponsors

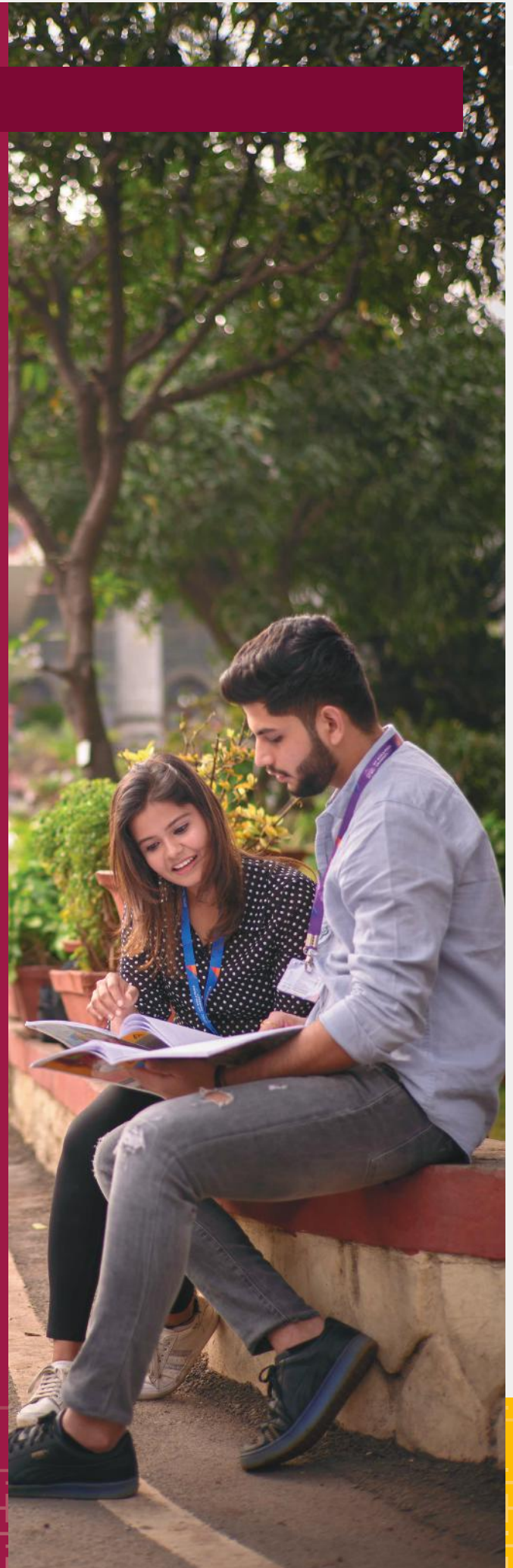
By joining a club or team, students learn to make the most of their time while engaging their mind and developing their skills, making meaningful contributions to the community at large. These clubs also participate in national and international competitions and have won various awards, ranks and recognition on numerous platforms.



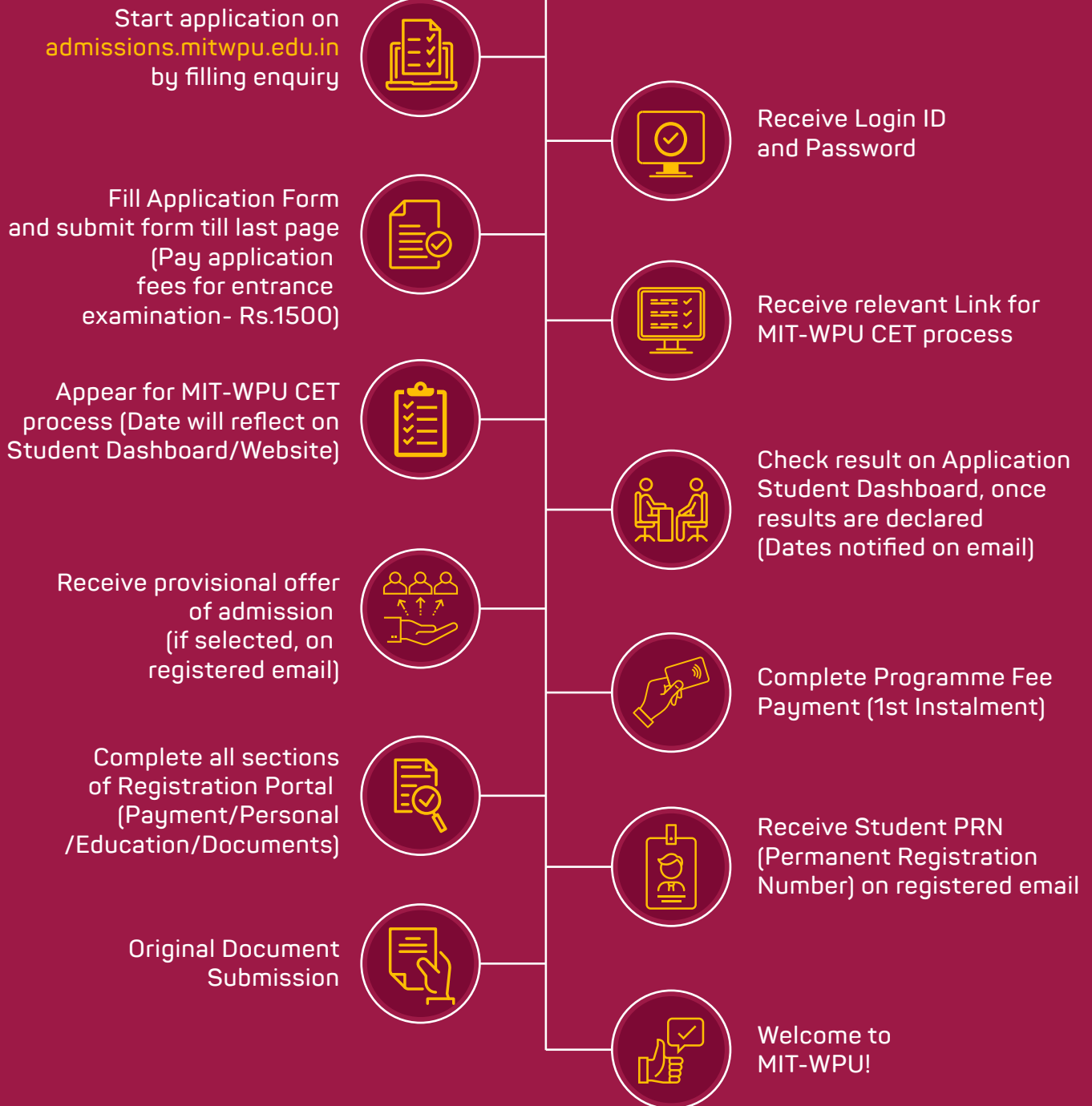
## PEACE STUDIES

The mandatory peace studies module at MIT-WPU aims to provide students with a holistic education that integrates various disciplines for their personal development. Through this module, students gain a greater understanding of the interconnectedness and interdependence of mind, matter, spirit, and consciousness. They also learn about the critical spiritual laws that can help them develop a scientific temperament and a spirit of inquiry, as well as a sense of humanism.

In addition, the peace studies module introduces students to various yoga practices that help them develop their information base and cognitive abilities, as well as their critical thinking skills and personality. Upon completing the course, students will have a better understanding of how elevated consciousness can positively impact human behaviour and contribute to a happier, healthier, more peaceful, and empowered world. Overall, the peace studies module aims to equip students with the knowledge and tools they need to become more conscious, compassionate, and responsible global citizens.



## ADMISSION PROCESS







Dr. Vishwanath Karad  
**MIT WORLD PEACE UNIVERSITY** | PUNE  
TECHNOLOGY, RESEARCH, SOCIAL INNOVATION & PARTNERSHIPS

<b>Call</b>	<b>+91-20-71177104 / 37</b>
<b>WhatsApp-only</b>	<b>+91-9881492848</b>
<b>Email</b>	<b>admissions@mitwpu.edu.in</b>
<b>Website</b>	<b>admissions.mitwpu.edu.in</b>
<b>Address</b>	<b>MIT-WPU Kothrud, Pune</b>

Scan to Apply



Disclaimer: The information published in this booklet is true to our knowledge and is correct at the time of publishing. Also, the pictures, photographs, illustrations, facts and figures, quotations, etc. appearing in this booklet have been collected from various sources and should not be used for any commercial purposes or reproduced in any form without prior permission. The given information in the brochure is Indicative and subject to change for the betterment of the programme. Subject to Pune jurisdiction only.